

# FA-RISE

# Gasdruckfeder

**FA-RISE** gas springs are widely used as an aid while lifting and a support while maintaining the open or closed position of different loads.

**FA-RISE** gas springs design provides proper piston rod speed and dumping force at the end of stroke. This secures soft, gentle movement of lifted elements.

DE

## GASDRUCKFEDERN

**FA-RISE** Gasfedern werden überall dort eingesetzt, wo unterschiedlichste Lasten in festgelegten Positionen gehoben, bewegt und abgestützt werden sollen. Die **FA-RISE** - Gasfederkonstruktionen bieten eine optimale Ausfahrgeschwindigkeit und Dämpfung, um einen hohen Komfort in einem weit gefassten Anwendungsbereich zu gewährleisten.

**FA-RISE** GAS SPRINGS / GASDRUCKFEDERN / SPRĘŻYNY GAZOWE

# 6/15



<b>s</b> STROKE (MM)	<b>l</b> EXT. LENGTH (MM)	<b>F1</b> EXT. FORCE F1 (N)	<b>ORDER NO.</b>
<b>20</b>	<b>71</b>	50	5110001
		75	5110002
		100	5110003
		125	5110004
		150	5110005
		175	5110006
		200	5110007
		225	5110008
		250	5110009
		275	5110010
		300	5110011
		325	5110012
		350	5110013
		375	5110014
		400	5110015
<b>40</b>	<b>111</b>	50	5110016
		75	5110017
		100	5110018
		125	5110019
		150	5110020
		175	5110021
		200	5110022
		225	5110023
		250	5110024
		275	5110025
		300	5110026
		325	5110027
		350	5110028
		375	5110029
		400	5110030
<b>50</b>	<b>131</b>	50	5110031
		75	5110032
		100	5110033
		125	5110034
		150	5110035
		175	5110036
		200	5110037
		225	5110038
		250	5110039
		275	5110040
		300	5110041
		325	5110042
		350	5110043
		375	5110044
		400	5110045

<b>s</b> STROKE (MM)	<b>l</b> EXT. LENGTH (MM)	<b>F1</b> EXT. FORCE F1 (N)	<b>ORDER NO.</b>
<b>60</b>	<b>155</b>	50	5110046
		75	5110047
		100	5110048
		125	5110049
		150	5110050
		175	5110051
		200	5110052
		225	5110053
		250	5110054
		275	5110055
		300	5110056
		325	5110057
		350	5110058
		375	5110059
		400	5110060
<b>80</b>	<b>195</b>	50	5110061
		75	5110062
		100	5110063
		125	5110064
		150	5110065
		175	5110066
		200	5110067
		225	5110068
		250	5110069
		275	5110070
		300	5110071
		325	5110072
		350	5110073
		375	5110074
		400	5110075

**FA-RISE** GAS SPRINGS / GASDRUCKFEDERN / SPRĘŻYNY GAZOWE

# 6/15



s STROKE (MM)	l EXT. LENGTH (MM)	F1 EXT. FORCE F1 (N)	ORDER NO.
<b>100</b>	<b>235</b>	50	5110076
		75	5110077
		100	5110078
		125	5110079
		150	5110080
		175	5110081
		200	5110082
		225	5110083
		250	5110084
		275	5110085
		300	5110086
		325	5110087
		350	5110088
		375	5110089
400	5110090		
<b>120</b>	<b>275</b>	50	5110090
		75	5110091
		100	5110092
		125	5110093
		150	5110094
		175	5110095
		200	5110096
		225	5110097
		250	5110098
		275	5110099
		300	5110100
		325	5110101
		350	5110102
		375	5110103
400	5110104		
<b>150</b>	<b>335</b>	50	5110105
		75	5110106
		100	5110107
		125	5110108
		150	5110109
		175	5110110
		200	5110111
		225	5110112
		250	5110113
		275	5110114
		300	5110115
		325	5110116
		350	5110117
		375	5110118
400	5110119		

s STROKE (MM)	l EXT. LENGTH (MM)	F1 EXT. FORCE F1 (N)	ORDER NO.
<b>175</b>	<b>395</b>	50	5110120
		75	5110121
		100	5110122
		125	5110123
		150	5110124
		175	5110125
		200	5110126
		225	5110127
		250	5110128
		275	5110129
		300	5110130
		325	5110131
		350	5110132
		375	5110133
400	5110134		
<b>200</b>	<b>445</b>	50	5110135
		75	5110136
		100	5110137
		125	5110138
		150	5110139
		175	5110140
		200	5110141
		225	5110142
		250	5110143
		275	5110144
		300	5110145
		325	5110146
		350	5110147
		375	5110148
400	5110149		

EN For further gas spring solutions tailored to your application, please contact us. A wide range of mountings can be found on pages 27/28

DE Weitere auf Ihre Anwendung abgestimmte Gasfedern bieten wir Ihnen gerne an. Eine breite Auswahl an passenden Anschlussstücken finden Sie auf Seite 27/28

PL W celu uzyskania informacji dotyczących sprężyn gazowych dopasowanych do konkretnego zastosowania, prosimy o kontakt. Szeroki zakres mocowań znajduje się na stronach 27/28

**FA-RISE** GAS SPRINGS / GASDRUCKFEDERN / SPRĘŻYNY GAZOWE

# 8/19



s STROKE (MM)	l EXT. LENGTH (MM)	F1 EXT. FORCE F1 (N)	ORDER NO.
<b>20</b>	<b>78</b>	100	5220001
		150	5220002
		200	5220003
		250	5220004
		300	5220005
		350	5220006
		400	5220007
		450	5220008
		500	5220009
		550	5220010
		600	5220011
		650	5220012
		700	5220013
		750	5220014
		800	5220015
<b>50</b>	<b>138</b>	100	5220016
		150	5220017
		200	5220018
		250	5220019
		300	5220020
		350	5220021
		400	5220022
		450	5220023
		500	5220024
		550	5220025
		600	5220026
		650	5220027
		700	5220028
		750	5220029
800	5220030		
<b>60</b>	<b>158</b>	100	5220031
		150	5220032
		200	5220033
		250	5220034
		300	5220035
		350	5220036
		400	5220037
		450	5220038
		500	5220039
		550	5220040
		600	5220041
		650	5220042
		700	5220043
		750	5220044
800	5220045		

s STROKE (MM)	l EXT. LENGTH (MM)	F1 EXT. FORCE F1 (N)	ORDER NO.
<b>80</b>	<b>203</b>	100	5220046
		150	5220047
		200	5220048
		250	5220049
		300	5220050
		350	5220051
		400	5220052
		450	5220053
		500	5220054
		550	5220055
		600	5220056
		650	5220057
		700	5220058
		750	5220059
800	5220060		
<b>100</b>	<b>243</b>	100	5220061
		150	5220062
		200	5220063
		250	5220064
		300	5220065
		350	5220066
		400	5220067
		450	5220068
		500	5220069
		550	5220070
		600	5220071
		650	5220072
		700	5220073
		750	5220074
800	5220075		

**FA-RISE** GAS SPRINGS / GASDRUCKFEDERN / SPRĘŻYNY GAZOWE

# 8/19



STROKE (MM)	EXT. LENGTH (MM)	EXT. FORCE F1 (N)	ORDER NO.
<b>125</b>	<b>293</b>	100	5220076
		150	5220077
		200	5220078
		250	5220079
		300	5220080
		350	5220081
		400	5220082
		450	5220083
		500	5220084
		550	5220085
		600	5220086
		650	5220087
		700	5220088
		750	5220089
800	5220090		
<b>140</b>	<b>323</b>	100	5220091
		150	5220092
		200	5220093
		250	5220094
		300	5220095
		350	5220096
		400	5220097
		450	5220098
		500	5220099
		550	5220100
		600	5220101
		650	5220102
		700	5220103
		750	5220104
800	5220105		
<b>160</b>	<b>363</b>	100	5220106
		150	5220107
		200	5220108
		250	5220109
		300	5220110
		350	5220111
		400	5220112
		450	5220113
		500	5220114
		550	5220115
		600	5220116
		650	5220117
		700	5220118
		750	5220119
800	5220120		

STROKE (MM)	EXT. LENGTH (MM)	EXT. FORCE F1 (N)	ORDER NO.
<b>175</b>	<b>393</b>	100	5220121
		150	5220122
		200	5220123
		250	5220124
		300	5220125
		350	5220126
		400	5220127
		450	5220128
		500	5220129
		550	5220130
		600	5220131
		650	5220132
		700	5220133
		750	5220134
800	5220135		
<b>200</b>	<b>443</b>	100	5220136
		150	5220137
		200	5220138
		250	5220139
		300	5220140
		350	5220141
		400	5220142
		450	5220143
		500	5220144
		550	5220145
		600	5220146
		650	5220147
		700	5220148
		750	5220149
800	5220150		

**FA-RISE** GAS SPRINGS / GASDRUCKFEDERN / SPRĘŻYNY GAZOWE

# 8/19



<b>s</b> STROKE (MM)	<b>l</b> EXT. LENGTH (MM)	<b>F1</b> EXT. FORCE F1 (N)	<b>ORDER NO.</b>
<b>220</b>	<b>483</b>	100	5220151
		150	5220152
		200	5220153
		250	5220154
		300	5220155
		350	5220156
		400	5220157
		450	5220158
		500	5220159
		550	5220160
		600	5220161
		650	5220162
		700	5220163
		750	5220164
800	5220165		
<b>250</b>	<b>553</b>	100	5220166
		150	5220167
		200	5220168
		250	5220169
		300	5220170
		350	5220171
		400	5220172
		450	5220173
		500	5220174
		550	5220175
		600	5220176
		650	5220177
		700	5220178
		750	5220179
800	5220180		
<b>275</b>	<b>603</b>	100	5220181
		150	5220182
		200	5220183
		250	5220184
		300	5220185
		350	5220186
		400	5220187
		450	5220188
		500	5220189
		550	5220190
		600	5220191
		650	5220192
		700	5220193
		750	5220194
800	5220195		

<b>s</b> STROKE (MM)	<b>l</b> EXT. LENGTH (MM)	<b>F1</b> EXT. FORCE F1 (N)	<b>ORDER NO.</b>
<b>300</b>	<b>653</b>	100	5220196
		150	5220197
		200	5220198
		250	5220199
		300	5220200
		350	5220201
		400	5220202
		450	5220203
		500	5220204
		550	5220205
		600	5220206
		650	5220207
		700	5220208
		750	5220209
800	5220210		
<b>350</b>	<b>753</b>	100	5220211
		150	5220212
		200	5220213
		250	5220214
		300	5220215
		350	5220216
		400	5220217
		450	5220218
		500	5220219
		550	5220220
		600	5220221
		650	5220222
		700	5220223
		750	5220224
800	5220225		

EN For further gas spring solutions tailored to your application, please contact us. A wide range of mountings can be found on pages 27/28

DE Weitere auf Ihre Anwendung abgestimmte Gasfedern bieten wir Ihnen gerne an. Eine breite Auswahl an passenden Anschlussteilen finden Sie auf Seite 27/28

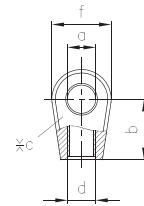
PL W celu uzyskania informacji dotyczących sprężyn gazowych dopasowanych do konkretnego zastosowania, prosimy o kontakt. Szeroki zakres mocowań znajduje się na stronach 27/28

# FA-MOUNTINGS / BEFESTIGUNGSELEMENTE / MOCOWANIA

## 6/15 & 8/19

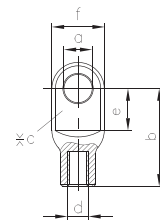
### EYELET / AUGÉ / UCHWYT OCZKOWY

 ORDER NO.	DIMENSIONS REGARDING SKETCH							MATERIAL
	a	b	c	d	e	f	sw	
0025611	6,1	18	10	M6	-	18	-	Z
0025612	8,1	18	10	M6	-	18	-	Z



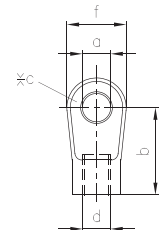
### EYELET / AUGÉ / UCHWYT OCZKOWY

 ORDER NO.	DIMENSIONS REGARDING SKETCH							MATERIAL
	a	b	c	d	e	f	sw	
0025319	6,1	21	3	M6	9	13	-	SZ
0025342	8,1	22	3	M6	10	13	-	SZ
0025009	8,1	28	5	M6	12	15	-	SZ



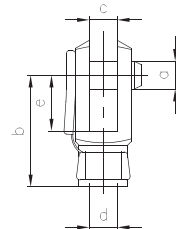
### EYELET / AUGÉ / UCHWYT OCZKOWY

 ORDER NO.	DIMENSIONS REGARDING SKETCH							MATERIAL
	a	b	c	d	e	f	sw	
0025613	8,1	25	10	M6	-	17	-	Z



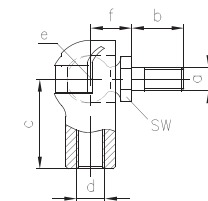
### CLEVIS WITH BOLT / GABELKOPF MIT BOLZEN / GŁÓWICA WIDEŁKOWA ZE SWORZNIEM

 ORDER NO.	DIMENSIONS REGARDING SKETCH							MATERIAL
	a	b	c	d	e	f	sw	
0025614	6	24	6	M6	12	-	-	SZ



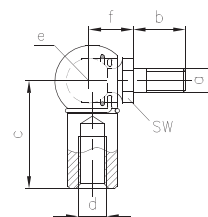
### ANGLE JOINT / WINKELGELENK / ŁĄCZE PRZEGUBOWE

 ORDER NO.	DIMENSIONS REGARDING SKETCH							MATERIAL
	a	b	c	d	e	f	sw	
0026541	M6	10	19	M6	10	12	13	P + SZ
0026542	M6	10	19	M6	10	12	13	SZ + SZ
0026543	M8	15	19	M6	10	17	13	SI + SZ
0026544	M6	10	25	M6	10	12	13	SI + SZ
0026545	M8	15	25	M6	10	17	13	SI + SZ



### ANGLE JOINT / WINKELGELENK / ŁĄCZE PRZEGUBOWE

 ORDER NO.	DIMENSIONS REGARDING SKETCH							MATERIAL
	a	b	c	d	e	f	sw	
0026546	M6	10	19	M6	10	12	13	SI + SZ
0026547	M6	10	25	M6	10	12	13	SI + SZ
0026548	M8	15	19	M6	10	17	13	SI + SZ
0026549	M8	15	25	M6	10	17	13	SI + SZ

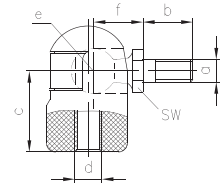


# FA-MOUNTINGS / BEFESTIGUNGSELEMENTE / MOCOWANIA

## 6/15 & 8/19

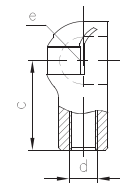
### ANGLE JOINT / WINKELGELENK / ŁĄCZE PRZEGUBOWE

 ORDER NO.	DIMENSIONS REGARDING SKETCH							MATERIAL
	a	b	c	d	e	f	sw	
0026550	M6	10	19	M6	10	12	13	P+SZ
0026551	M8	15	19	M6	10	17	13	P+SZ



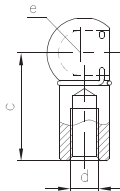
### BALL SOCKET / KUGELPFANNE / GNIAZDO PRZEGUBU

 ORDER NO.	DIMENSIONS REGARDING SKETCH							MATERIAL
	a	b	c	d	e	f	sw	
0026102	-	-	19	M6	10	-	-	P
0022078	-	-	19	M6	10	-	-	SI
0025615	-	-	25	M6	10	-	-	SZ



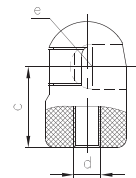
### BALL SOCKET / KUGELPFANNE / GNIAZDO PRZEGUBU

 ORDER NO.	DIMENSIONS REGARDING SKETCH							MATERIAL
	a	b	c	d	e	f	sw	
0022265	-	-	19	M6	10	-	-	SZ
0025616	-	-	25	M6	10	-	-	SZ



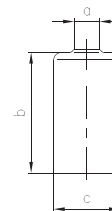
### BALL SOCKET / KUGELPFANNE / GNIAZDO PRZEGUBU

 ORDER NO.	DIMENSIONS REGARDING SKETCH							MATERIAL
	a	b	c	d	e	f	sw	
0026045	-	-	19	M6	10	-	-	P



### DUST CAP / STAUBSCHUTZKAPPE / KOŁPAK OCHRONNY

 ORDER NO.	DIMENSIONS REGARDING SKETCH							MATERIAL
	a	b	c	d	e	f	sw	
0025203	8	32	20	-	-	-	-	P



#### ENG

⅓	material thickness
A	aluminum
SZ	steel zinc coated
SI	steel zinc iron coated
SX	stainless steel
P	plastic
Z	zinc die-cast zinc coated





#### DE





⅓	Materialdicke
A	Aluminium
SZ	Stahl verzinkt
SI	Stahl zinkeisenbeschichtet
SX	Edelstahl
P	Kunststoff
Z	Zinkdruckguss verzinkt



# 10/22



 <b>s</b> STROKE (MM)	 <b>l</b> EXT. LENGTH (MM)	 <b>F1</b> EXT. FORCE F1 (N)	 <b>ORDER NO.</b>
<b>45</b>	<b>132</b>	150	5330001
		200	5330002
		300	5330003
		400	5330004
		500	5330005
		600	5330006
		700	5330007
		800	5330008
		900	5330009
		1000	5330010
		1100	5330011
		1200	5330012
		1300	5330013
<b>80</b>	<b>202</b>	150	5330016
		200	5330017
		300	5330018
		400	5330019
		500	5330020
		600	5330021
		700	5330022
		800	5330023
		900	5330024
		1000	5330025
		1100	5330026
		1200	5330027
		1300	5330028
<b>100</b>	<b>242</b>	150	5330031
		200	5330032
		300	5330033
		400	5330034
		500	5330035
		600	5330036
		700	5330037
		800	5330038
		900	5330039
		1000	5330040
		1100	5330041
		1200	5330042
		1300	5330043

 <b>s</b> STROKE (MM)	 <b>l</b> EXT. LENGTH (MM)	 <b>F1</b> EXT. FORCE F1 (N)	 <b>ORDER NO.</b>
<b>125</b>	<b>292</b>	150	5330046
		200	5330047
		300	5330048
		400	5330049
		500	5330050
		600	5330051
		700	5330052
		800	5330053
		900	5330054
		1000	5330055
		1100	5330056
		1200	5330057
		1300	5330058
<b>150</b>	<b>342</b>	150	5330061
		200	5330062
		300	5330063
		400	5330064
		500	5330065
		600	5330066
		700	5330067
		800	5330068
		900	5330069
		1000	5330070
		1100	5330071
		1200	5330072
		1300	5330073

**FA-RISE** GAS SPRINGS / GASDRUCKFEDERN / SPRĘŻYNY GAZOWE

# 10/22



<b>s</b> STROKE (MM)	<b>l</b> EXT. LENGTH (MM)	<b>F1</b> EXT. FORCE F1 (N)	<b>ORDER NO.</b>
<b>160</b>	<b>362</b>	150	5330076
		200	5330077
		300	5330078
		400	5330079
		500	5330080
		600	5330081
		700	5330082
		800	5330083
		900	5330084
		1000	5330085
		1100	5330086
		1200	5330087
		1300	5330088
<b>175</b>	<b>392</b>	150	5330091
		200	5330092
		300	5330093
		400	5330094
		500	5330095
		600	5330096
		700	5330097
		800	5330098
		900	5330099
		1000	5330100
		1100	5330101
		1200	5330102
		1300	5330103
<b>200</b>	<b>442</b>	150	5330106
		200	5330107
		300	5330108
		400	5330109
		500	5330110
		600	5330111
		700	5330112
		800	5330113
		900	5330114
		1000	5330115
		1100	5330116
		1200	5330117
		1300	5330118

<b>s</b> STROKE (MM)	<b>l</b> EXT. LENGTH (MM)	<b>F1</b> EXT. FORCE F1 (N)	<b>ORDER NO.</b>
<b>250</b>	<b>552</b>	150	5330121
		200	5330122
		300	5330123
		400	5330124
		500	5330125
		600	5330126
		700	5330127
		800	5330128
		900	5330129
		1000	5330130
		1100	5330131
		1200	5330132
		1300	5330133
<b>300</b>	<b>652</b>	150	5330136
		200	5330137
		300	5330138
		400	5330139
		500	5330140
		600	5330141
		700	5330142
		800	5330143
		900	5330144
		1000	5330145
		1100	5330146
		1200	5330147
		1300	5330148

**FA-RISE** GAS SPRINGS / GASDRUCKFEDERN / SPRĘŻYNY GAZOWE

# 10/22



<b>s</b> STROKE (MM)	<b>l</b> EXT. LENGTH (MM)	<b>F1</b> EXT. FORCE F1 (N)	<b>ORDER NO.</b>
<b>350</b>	<b>752</b>	150	5330151
		200	5330152
		300	5330153
		400	5330154
		500	5330155
		600	5330156
		700	5330157
		800	5330158
		900	5330159
		1000	5330160
		1100	5330161
		1200	5330162
		1300	5330163
<b>390</b>	<b>832</b>	150	5330166
		200	5330167
		300	5330168
		400	5330169
		500	5330170
		600	5330171
		700	5330172
		800	5330173
		900	5330174
		1000	5330175
		1100	5330176
		1200	5330177
		1300	5330178
<b>407</b>	<b>866</b>	150	5330181
		200	5330182
		300	5330183
		400	5330184
		500	5330185
		600	5330186
		700	5330187
		800	5330188
		900	5330189
		1000	5330190
		1100	5330191
		1200	5330192
		1300	5330193

<b>s</b> STROKE (MM)	<b>l</b> EXT. LENGTH (MM)	<b>F1</b> EXT. FORCE F1 (N)	<b>ORDER NO.</b>
<b>450</b>	<b>952</b>	150	5330196
		200	5330197
		300	5330198
		400	5330199
		500	5330200
		600	5330201
		700	5330202
		800	5330203
		900	5330204
		1000	5330205
		1100	5330206
		1200	5330207
		1300	5330208

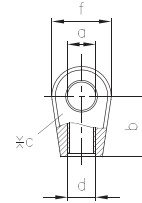
EN For further gas spring solutions tailored to your application, please contact us.  
 DE Weitere auf Ihre Anwendung abgestimmte Gasfedern bieten wir Ihnen gerne an.  
 PL W celu uzyskania informacji dotyczących sprężyn gazowych dopasowanych do konkretnego zastosowania, prosimy o kontakt.

**FA-MOUNTINGS / BEFESTIGUNGSELEMENTE / MOCOWANIA**

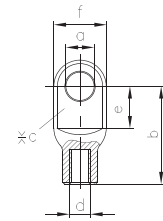
# 10/22

**EYELET / AUGÉ / UCHWYT OCZKOWY**

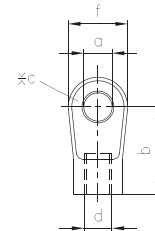
 ORDER NO.	DIMENSIONS REGARDING SKETCH							MATERIAL
	a	b	c	d	e	f	sw	
0025617	8,1	18	10	M8	-	18	-	Z
0025618	10,1	18	10	M8	-	18	-	Z
0022398	8,1	21	17,5	M8	-	18	-	Z
0025341	10,1	25	18	M8	-	18	-	Z
0025619	8,1	25	10	M8	-	17	-	Z


**EYELET / AUGÉ / UCHWYT OCZKOWY**

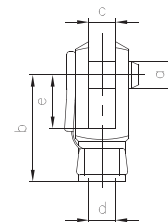
 ORDER NO.	DIMENSIONS REGARDING SKETCH							MATERIAL
	a	b	c	d	e	f	sw	
0025114	8,1	28	5	M8	12	15	-	SZ


**EYELET / AUGÉ / UCHWYT OCZKOWY**

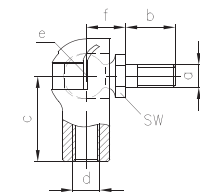
 ORDER NO.	DIMENSIONS REGARDING SKETCH							MATERIAL
	a	b	c	d	e	f	sw	
0025620	8,1	24,5	5	M8	14	12	-	SZ
0025621	8,1	19	10	M8	14	14	-	SZ


**CLEVIS WITH BOLT / GABELKOPF MIT BOLZEN / GŁÓWICA WIDEŁKOWA ZE SWORZNIEM**

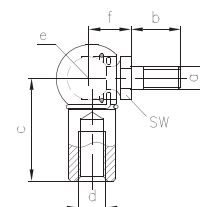
 ORDER NO.	DIMENSIONS REGARDING SKETCH							MATERIAL
	a	b	c	d	e	f	sw	
0025622	8	32	8	M8	16	-	-	SZ
0025623	8	48	8	M8	32	-	-	SZ


**ANGLE JOINT / WINKELGELENK / ŁĄCZE PRZEGUBOWE**

 ORDER NO.	DIMENSIONS REGARDING SKETCH							MATERIAL
	a	b	c	d	e	f	sw	
0026552	M6	10	25	M8	10	12	13	SZ
0026553	M8	15	25	M8	10	17	13	SZ


**ANGLE JOINT / WINKELGELENK / ŁĄCZE PRZEGUBOWE**

 ORDER NO.	DIMENSIONS REGARDING SKETCH							MATERIAL
	a	b	c	d	e	f	sw	
0026554	M8	16	22	M8	13	13	11	SZ
0026555	M10	20	22	M8	13	16	17	SZ
0026556	M8	16	30	M8	13	13	11	SZ
0026557	M10	20	30	M8	13	16	17	SZ
0025345	M8	16	30	M8	13	13	11	SZ

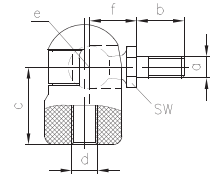


**FA-MOUNTINGS / BEFESTIGUNGSELEMENTE / MOCOWANIA**

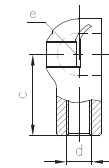
# 10/22

**ANGLE JOINT / WINKELGELENK / ŁĄCZE PRZEGUBOWE**

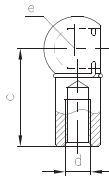
 ORDER NO.	DIMENSIONS REGARDING SKETCH							MATERIAL*
	a	b	c	d	e	f	sw	
0026558	M6	13	18	M8	10	12	13	P+SZ
0026559	M8	15	18	M8	10	17	13	P+SZ


**BALL SOCKET / KUGELPFANNE / GNIAZDO PRZEGUBU**

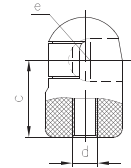
 ORDER NO.	DIMENSIONS REGARDING SKETCH							MATERIAL
	a	b	c	d	e	f	sw	
0022963	-	-	25	M8	10	-	-	SZ


**BALL SOCKET / KUGELPFANNE / GNIAZDO PRZEGUBU**

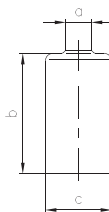
 ORDER NO.	DIMENSIONS REGARDING SKETCH							MATERIAL
	a	b	c	d	e	f	sw	
0025624	-	-	19			-	-	SZ
0025532	-	-	22	M8	13	-	-	SZ
0022873	-	-	30	M8	13	-	-	SZ


**BALL SOCKET / KUGELPFANNE / GNIAZDO PRZEGUBU**

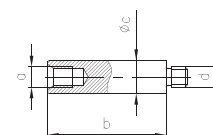
 ORDER NO.	DIMENSIONS REGARDING SKETCH							MATERIAL
	a	b	c	d	e	f	sw	
0025407	-	-	18	M8	10	-	-	P


**DUST CAP / STAUBSCHUTZKAPPE / KOŁPAK OCHRONNY**

 ORDER NO.	DIMENSIONS REGARDING SKETCH							MATERIAL
	a	b	c	d	e	f	sw	
0025384	10	38	23,5	-	-	-	-	P


**EXTENSION / VERLÄNGERUNG / PRZEDŁUŻKA**

 ORDER NO.	DIMENSIONS REGARDING SKETCH							MATERIAL
	a	b	c	d	e	f	sw	
0025625	M8	35	12	M8	-	-	-	SI
0025626	M8	60	12	M8	-	-	-	SI


**ENG**

⅓	material thickness
A	aluminum
SZ	steel zinc coated
SI	steel zinc iron coated
SX	stainless steel
P	plastic
Z	zinc die-cast zinc coated

**DE**

⅓	Materialdicke
A	Aluminium
SZ	Stahl verzinkt
SI	Stahl zink-eisenbeschichtet
SX	Edelstahl
P	Kunststoff
Z	Zinkdruckguss verzinkt

**FA-RISE** GAS SPRINGS / GASDRUCKFEDERN / SPRĘŻYNY GAZOWE

# 14/28



<b>s</b> STROKE (MM)	<b>l</b> EXT. LENGTH (MM)	<b>F1</b> EXT. FORCE F1 (N)	<b>ORDER NO.</b>
<b>100</b>	<b>245</b>	450	5440001
		500	5440002
		600	5440003
		700	5440004
		750	5440005
		800	5440006
		900	5440007
		1000	5440008
		1100	5440009
		1250	5440010
		1500	5440011
		1750	5440012
		1900	5440013
		2250	5440014
		2500	5440015
<b>150</b>	<b>345</b>	450	5440016
		500	5440017
		600	5440018
		700	5440019
		750	5440020
		800	5440021
		900	5440022
		1000	5440023
		1100	5440024
		1250	5440025
		1500	5440026
		1750	5440027
		1900	5440028
		2250	5440029
		2500	5440030
<b>200</b>	<b>445</b>	450	5440031
		500	5440032
		600	5440033
		700	5440034
		750	5440035
		800	5440036
		900	5440037
		1000	5440038
		1100	5440039
		1250	5440040
		1500	5440041
		1750	5440042
		1900	5440043
		2250	5440044
		2500	5440045

<b>s</b> STROKE (MM)	<b>l</b> EXT. LENGTH (MM)	<b>F1</b> EXT. FORCE F1 (N)	<b>ORDER NO.</b>
<b>250</b>	<b>545</b>	450	5440046
		500	5440047
		600	5440048
		700	5440049
		750	5440050
		800	5440051
		900	5440052
		1000	5440053
		1100	5440054
		1250	5440055
		1500	5440056
		1750	5440057
		1900	5440058
		2250	5440059
		2500	5440060
<b>275</b>	<b>595</b>	450	5440061
		500	5440062
		600	5440063
		700	5440064
		750	5440065
		800	5440066
		900	5440067
		1000	5440068
		1100	5440069
		1250	5440070
		1500	5440071
		1750	5440072
		1900	5440073
		2250	5440074
		2500	5440075
<b>300</b>	<b>645</b>	450	5440076
		500	5440077
		600	5440078
		700	5440079
		750	5440080
		800	5440081
		900	5440082
		1000	5440083
		1100	5440084
		1250	5440085
		1500	5440086
		1750	5440087
		1900	5440088
		2250	5440089
		2500	5440090

**FA-RISE** GAS SPRINGS / GASDRUCKFEDERN / SPRĘŻYNY GAZOWE

# 14/28



<b>s</b> STROKE (MM)	<b>l</b> EXT. LENGTH (MM)	<b>F1</b> EXT. FORCE F1 (N)	<b>ORDER NO.</b>
<b>325</b>	<b>705</b>	450	5440091
		500	5440092
		600	5440093
		700	5440094
		750	5440095
		800	5440096
		900	5440097
		1000	5440098
		1100	5440099
		1250	5440100
		1500	5440101
		1750	5440102
		1900	5440103
		2250	5440104
2500	5440105		
<b>350</b>	<b>755</b>	450	5440106
		500	5440107
		600	5440108
		700	5440109
		750	5440110
		800	5440111
		900	5440112
		1000	5440113
		1100	5440114
		1250	5440115
		1500	5440116
		1750	5440117
		1900	5440118
		2250	5440119
2500	5440120		
<b>375</b>	<b>805</b>	450	5440121
		500	5440122
		600	5440123
		700	5440124
		750	5440125
		800	5440126
		900	5440127
		1000	5440128
		1100	5440129
		1250	5440130
		1500	5440131
		1750	5440132
		1900	5440133
		2250	5440134
2500	5440135		


<b>s</b> STROKE (MM)	<b>l</b> EXT. LENGTH (MM)	<b>F1</b> EXT. FORCE F1 (N)	<b>ORDER NO.</b>
<b>395</b>	<b>845</b>	450	5440136
		500	5440137
		600	5440138
		700	5440139
		750	5440140
		800	5440141
		900	5440142
		1000	5440143
		1100	5440144
		1250	5440145
		1500	5440146
		1750	5440147
		1900	5440148
		2250	5440149
2500	5440150		
<b>450</b>	<b>955</b>	450	5440151
		500	5440152
		600	5440153
		700	5440154
		750	5440155
		800	5440156
		900	5440157
		1000	5440158
		1100	5440159
		1250	5440160
		1500	5440161
		1750	5440162
		1900	5440163
		2250	5440164
2500	5440165		
<b>500</b>	<b>1055</b>	450	5440166
		500	5440167
		600	5440168
		700	5440169
		750	5440170
		800	5440171
		900	5440172
		1000	5440173
		1100	5440174
		1250	5440175
		1500	5440176
		1750	5440177
		1900	5440178
		2250	5440179
2500	5440180		

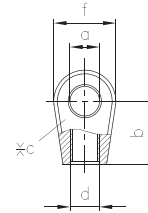
EN For further gas spring solutions tailored to your application, please contact us.  
 DE Weitere auf Ihre Anwendung abgestimmte Gasfedern bieten wir Ihnen gerne an.  
 PL W celu uzyskania informacji dotyczących sprężyn gazowych dopasowanych do konkretnego zastosowania, prosimy o kontakt.


**FA-MOUNTINGS / BEFESTIGUNGSELEMENTE / MOCOWANIA**

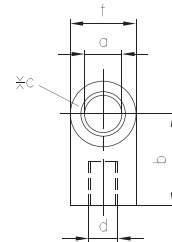
# 14/28


**EYELET / AUGES / UCHWYT OCZKOWY**

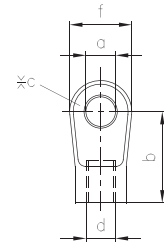
 ORDER NO.	DIMENSIONS REGARDING SKETCH							MATERIAL
	a	b	c	d	e	f	sw	
0025627	8,1	16	12	M10	-	19	-	Z
0025628	10,1	16	12	M10	-	19	-	Z
0027597	8,1	28	10	M10	-	20	-	SZ
0025330	10,1	28	10	M10	-	20	-	SZ
0025346	8,1	28	12	M10	-	20	-	SZ
0025509	10,1	28	12	M10	-	20	-	SZ



**EYELET / AUGES / UCHWYT OCZKOWY**

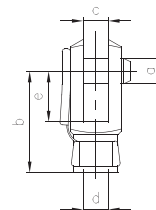
 ORDER NO.	DIMENSIONS REGARDING SKETCH							MATERIAL
	a	b	c	d	e	f	sw	
0025629	8,1	25	18	M10	-	18	-	Z
0025630	10,1	25	18	M10	-	18	-	Z



**EYELET / AUGES / UCHWYT OCZKOWY**

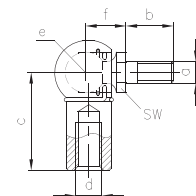
 ORDER NO.	DIMENSIONS REGARDING SKETCH							MATERIAL
	a	b	c	d	e	f	sw	
0025631	8,1	30	10	M10	16	18	-	SZ
0025632	10,1	30	10	M10	16	18	-	SZ
0025633	10,1	35	10	M10	16	18	-	SZ


**CLEVIS WITH BOLT / GABELKOPF MIT BOLZEN / GŁOWICA WIDŁAKOWA ZE SWORZNIEM**

 ORDER NO.	DIMENSIONS REGARDING SKETCH							MATERIAL
	a	b	c	d	e	f	sw	
0025634	8	32	8	M10	16	-	-	SZ
0025635	10	40	10	M10	20	-	-	SZ
0025636	10	60	10	M10	40	-	-	SZ


**ANGLE JOINT / WINKELGELENK / ŁĄCZE PRZEGUBOWE**

 ORDER NO.	DIMENSIONS REGARDING SKETCH							MATERIAL
	a	b	c	d	e	f	sw	
0026560	M10	20	30	M10	16	16	13	SZ
0026561	M10	20	35	M10	16	16	13	SZ



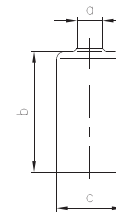


**FA-MOUNTINGS / BEFESTIGUNGSELEMENTE / MOCOWANIA**

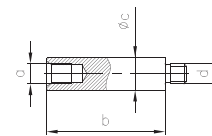
# 14/28

**DUST CAP / STAUBSCHUTZKAPPE / KOŁPAK OCHRONNY**

 ORDER NO.	DIMENSIONS REGARDING SKETCH							MATERIAL
	a	b	c	d	e	f	sw	
<b>0025637</b>	14	42	29	-	-	-	-	P


**EXTENSION / VERLÄNGERUNG / PRZEDŁUŻKA**

 ORDER NO.	DIMENSIONS REGARDING SKETCH							MATERIAL
	a	b	c	d	e	f	sw	
<b>0025638</b>	M10	25	16	M10	-	-	-	SI
<b>0025639</b>	M10	50	16	M10	-	-	-	SI


**ENG**

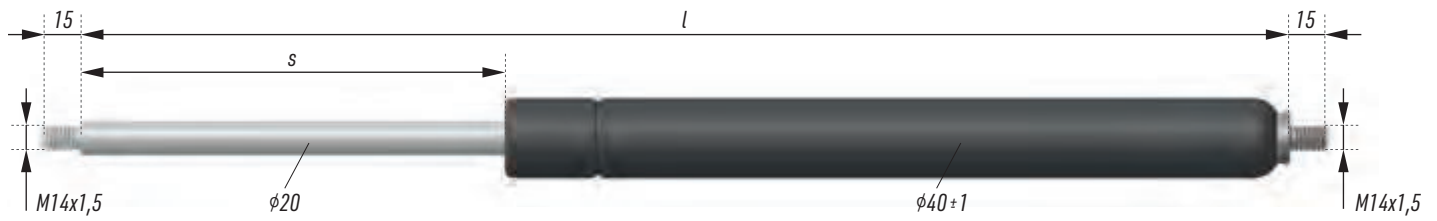
×	material thickness
A	aluminum
SZ	steel zinc coated
SI	steel zinc iron coated
SX	stainless steel
P	plastic
Z	zinc die-cast zinc coated

**DE**

×	Materialdicke
A	Aluminium
SZ	Stahl verzinkt
SI	Stahl zinkeisenbeschichtet
SX	Edelstahl
P	Kunststoff
Z	Zinkdruckguss verzinkt

**FA-RISE** GAS SPRINGS / GASDRUCKFEDERN / SPRĘŻYNY GAZOWE

# 20/40



<b>s</b> STROKE (MM)	<b>l</b> EXT. LENGTH (MM)	<b>F1</b> EXT. FORCE F1 (N)	<b>ORDER NO.</b>
<b>100</b>	<b>285</b>	500	5551111
		1000	5551112
		1500	5551113
		2000	5551114
		2500	5551115
		3000	5551116
		3500	5551117
		4000	5551118
		4500	5551119
		5000	5551120
<b>150</b>	<b>385</b>	500	5551121
		1000	5551122
		1500	5551123
		2000	5551124
		2500	5551125
		3000	5551126
		3500	5551127
		4000	5551128
		4500	5551129
		5000	5551130
<b>200</b>	<b>485</b>	500	5551131
		1000	5551132
		1500	5551133
		2000	5551134
		2500	5551135
		3000	5551136
		3500	5551137
		4000	5551138
		4500	5551139
		5000	5551140
<b>250</b>	<b>585</b>	500	5551141
		1000	5551142
		1500	5551143
		2000	5551144
		2500	5551145
		3000	5551146
		3500	5551147
		4000	5551148
		4500	5551149
		5000	5551150

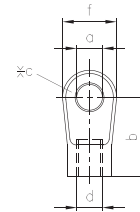
<b>s</b> STROKE (MM)	<b>l</b> EXT. LENGTH (MM)	<b>F1</b> EXT. FORCE F1 (N)	<b>ORDER NO.</b>
<b>300</b>	<b>685</b>	500	5551151
		1000	5551152
		1500	5551153
		2000	5551154
		2500	5551155
		3000	5551156
		3500	5551157
		4000	5551158
		4500	5551159
		5000	5551160
<b>400</b>	<b>885</b>	500	5551161
		1000	5551162
		1500	5551163
		2000	5551164
		2500	5551165
		3000	5551166
		3500	5551167
		4000	5551168
		4500	5551169
		5000	5551170
<b>500</b>	<b>1085</b>	500	5551171
		1000	5551172
		1500	5551173
		2000	5551174
		2500	5551175
		3000	5551176
		3500	5551177
		4000	5551178
		4500	5551179
		5000	5551180
<b>600</b>	<b>1285</b>	500	5551181
		1000	5551182
		1500	5551183
		2000	5551184
		2500	5551185
		3000	5551186
		3500	5551187
		4000	5551188
		4500	5551189
		5000	5551190

**FA-MOUNTINGS / BEFESTIGUNGSELEMENTE / MOCOWANIA**

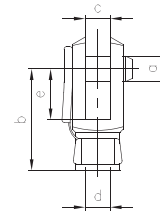
# 20/40

**EYELET / AUGE / UCHWYT OCZKOWY**

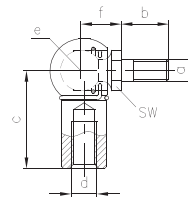
 ORDER NO.	DIMENSIONS REGARDING SKETCH							MATERIAL
	a	b	c	d	e	f	sw	
0025640	14,1	40	14	M14x1,5	21	25	-	SZ


**CLEVIS WITH BOLT / GABELKOPF MIT BOLZEN / GŁOWICA WIDŁKOWA ZE SWORZNIEM**

 ORDER NO.	DIMENSIONS REGARDING SKETCH							MATERIAL
	a	b	c	d	e	f	sw	
0025641	14	56	14	M14x1,5	-	28	-	SZ


**ANGLE JOINT / WINKELGELENK / ŁĄCZE PRZEGUBOWE**

 ORDER NO.	DIMENSIONS REGARDING SKETCH							MATERIAL
	a	b	c	d	e	f	sw	
0026562	M14	28	45	M14x1,5	19	20	16	SZ


**ENG**

$\frac{X}{X}$	material thickness
A	aluminum
SZ	steel zinc coated
SI	steel zinc iron coated
SX	stainless steel
P	plastic
Z	zinc die-cast zinc coated

**DE**

$\frac{X}{X}$	Materialdicke
A	Aluminium
SZ	Stahl verzinkt
SI	Stahl zinkeisenbeschichtet
SX	Edelstahl
P	Kunststoff
Z	Zinkdruckguss verzinkt